

SUPPLIED BY



INTERIOR FINISHES

# ALUMINIUM DOORS

SLIDING & BI-FOLD



## SLIMLINES, LESSFRAME & MOREGLASS

Bespoke aluminium doors and windows act as a perfect compliment to a structure and can even be a statement as a solo design feature.

Our new SLIM profiles result in an aesthetically pleasing design with super slim sight lines that allow natural light to flood into your property; and bring the feeling of outdoors, indoors.

Our door profiles can accommodate for heights of up to 3m and weights in excess of 300kg; resulting in huge uninterrupted glass panes, whilst not compromising on thermal efficiency or ease of operation.

We supply and install windows and doors that will meet your requirements, be it design, efficiency, or both.

**GET IN TOUCH FOR MORE  
INFORMATION.**

# SUPER SLIM SLIDING

The SUPER SLIM\* sliding door elegantly brings the outside, inside by combining a frameless profile with large, uninterrupted glazed units.

The sophisticated minimalist design and **26mm sight** lines create a light and fluid appearance, even for the largest windows.

### Key features

Minimalist Design

**26mm profile**

Frameless profile

Floor to ceiling

Up to 3m in height

Up to 320kg loads /panel

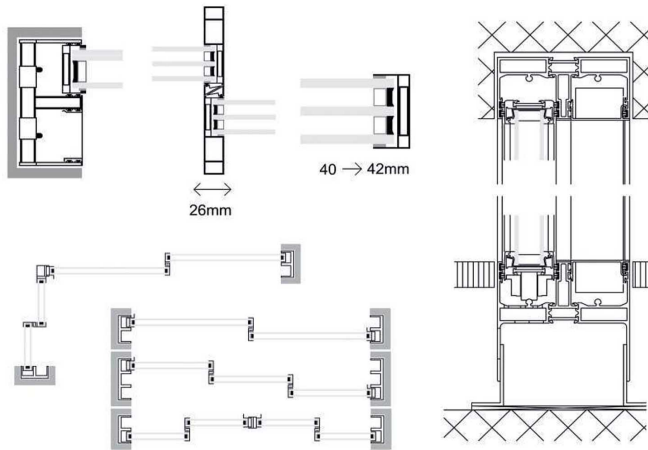
Insulation:  $U_w = 0.85 \text{ W/m}^2\text{K}$

\*with  $U_g = 0.7 \text{ W/m}^2\text{K}$ , element size 4000x2600mm

Water tight (EN12207) E750

Airtight (EN12208) class 4

Weather Resistant (EN12210) C3



White  
  Grey  
  Black  
 Other colours available on request

\*ORIGINAL SLIM sliding door also available





DESIGN PLUS LONDON SUPER SLIM

# ALUMINIUM BI-FOLD

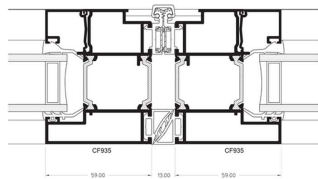
Bi-fold doors are ideal for maximising an opening and perfect for connecting your property to the garden.

Bespoke opening sizes, configurations and door designs allow flexibility to design doors that suit your lifestyle and meet your requirements and tastes.

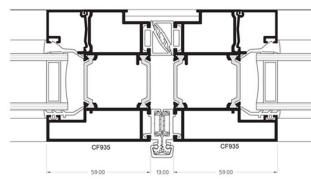
**Key features**

- Profiles from 120mm
- Low threshold cills
- Concealed hinges
- Heights up to 3m
- Max. panel width 1.2m
- Max. run 6426 mm

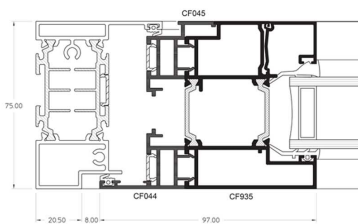
- Up to 7 sections
- Opening inwards or outwards, left or right
- Multi-point locking system
- Insulation:  $U_w = 1.3 W/m^2K$
- Dual colour paint 300 colours



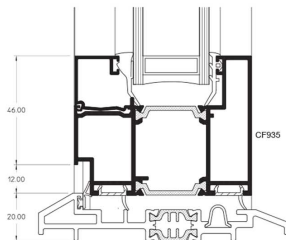
OPEN OUT HINGE



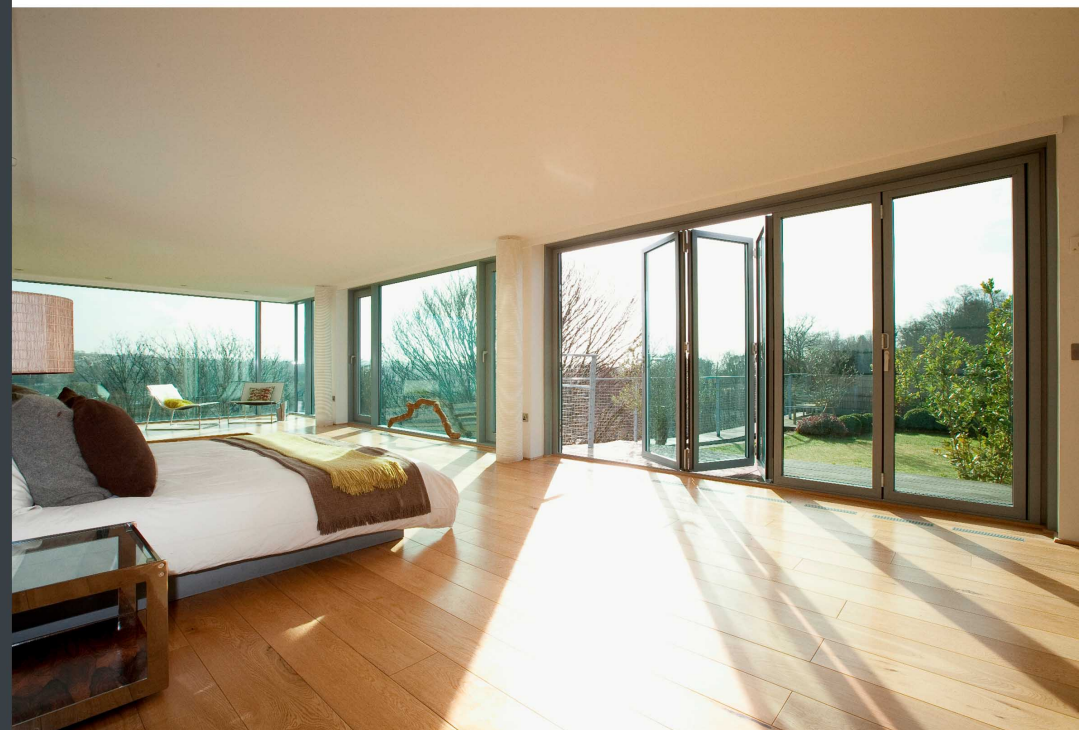
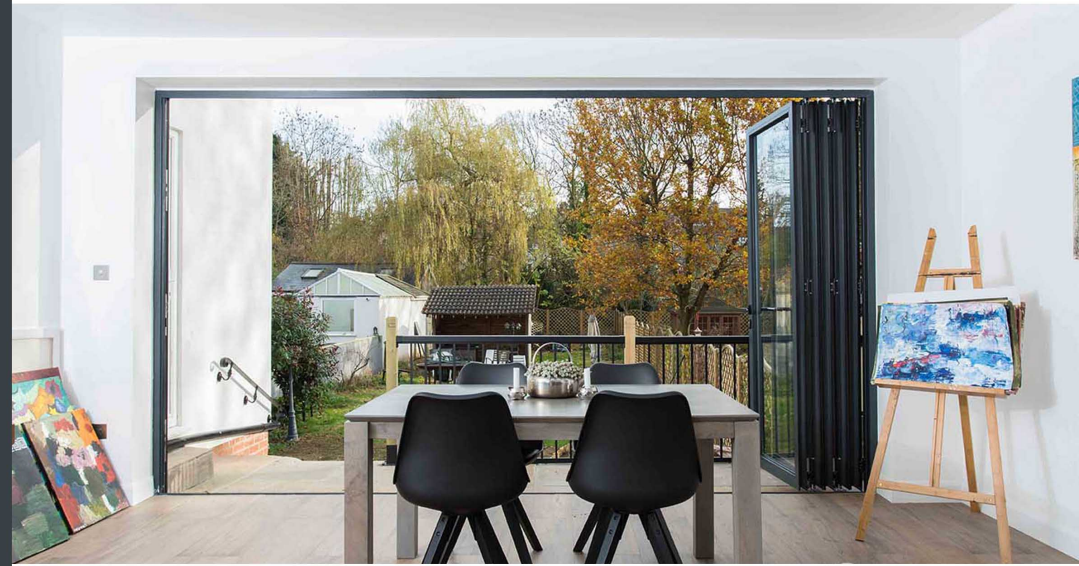
OPEN OUT ROLLER



OPENING OUT LOCKING JAMB



LOW THRESHOLD CILL



# FRENCH DOORS

Aluminium French Doors are designed to maximise the daylight that enters your home and keep it better protected.

Aluminium is amazingly strong and durable which allows for slimmer frames and more glass to open up the views and rooms you love.

The manufacturing process enables us to create almost any style of French door and frame configuration, allowing you the freedom to design your own or match an existing style.

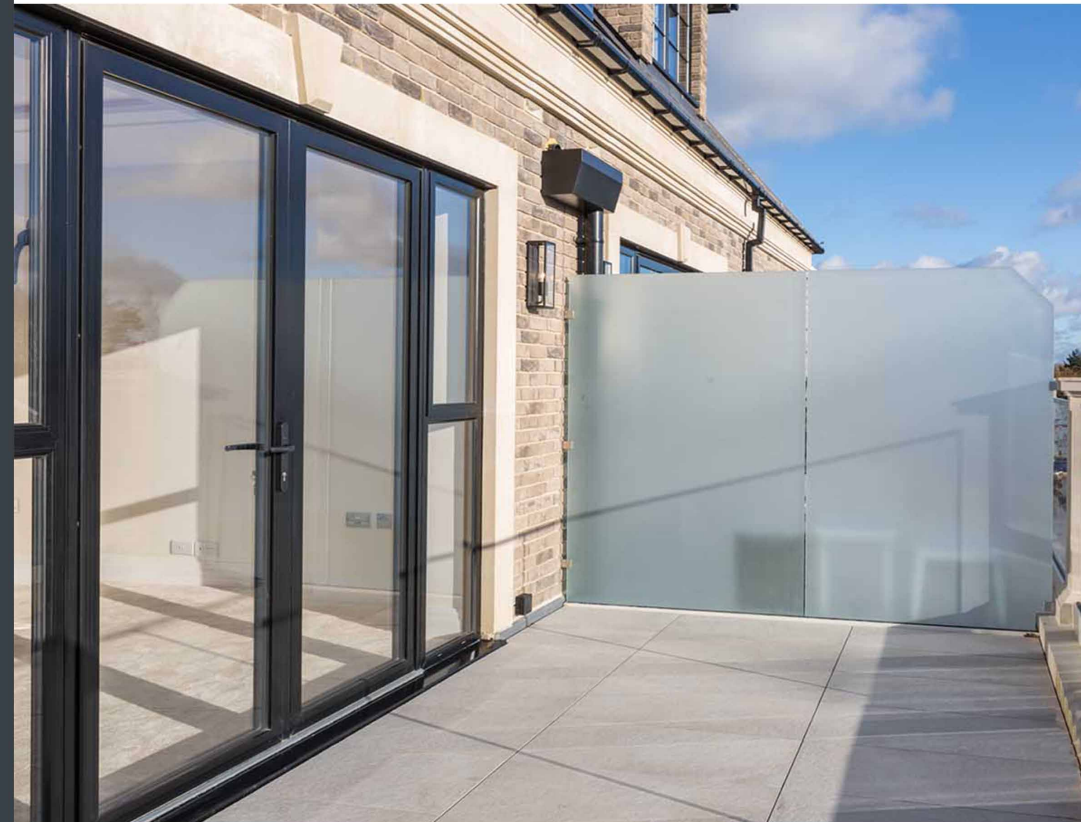
Wide range of design options including:  
 frame profiles  
 glazing bars,  
 frame features  
 patterned glass

**Key features**

- Low threshold cill
- Max height 2.2m
- Broad range of hardware
- Multipoint locks
- Meets SBD requirements
- 200 Colour options

**To increase your security and safety, we use multi-point locks and toughened glass on all products. Our products comply with all current Building Regulation requirements.**

**All windows are installed by FENSA approved installers.**





INTERIOR FINISHES

DESIGN PLUS LONDON  
INTERIOR FINISHES

**ALUMINIUM DOORS** SLIDING & BI-FOLD

22 NORTH END PARADE  
KENSINGTON OLYMPIA  
LONDON  
W14 0SJ

+44 207 602 1087

[hello@designpluslondon.co.uk](mailto:hello@designpluslondon.co.uk)

[www.designpluslondon.co.uk](http://www.designpluslondon.co.uk)